

**OPEN CROATIAN SENIOR AND JUNIOR (U21)
CHAMPIONSHIP
CLASSES 470, 49er, 49er FX, Finn, Laser, Laser radialW, RSX
OPEN CROATIAN SENIOR AND JUNIOR CHAMPIONSHIP
FOR CLASSES Laser Radial, 420, Laser Radial(U19), 420 (U19),
Laser 4.7 (U18), Techno 293 (U17)**

SAILING INSTRUCTIONS

1. RULES

- 1.1. The regatta will be governed by the rules as defined in The Racing Rules of Sailing.
1.2. If there is a conflict between languages the Croatian text will take precedence.

2. NOTICES TO COMPETITORS

Notices to competitors will be posted on the official notice board located at hotel Miramare.

3. CHANGES TO SAILING INSTRUCTIONS

Any change to the sailing instructions will be posted before 0900 on the day it will take effect, except that any change to the schedule of races will be posted by 2000 on the day before it will take effect.

4. SIGNALS MADE ASHORE

- 4.1. Signals made ashore will be displayed at signal mast in front of hotel Miramare.
4.2. Flag D with one sound means 'The warning signal will be made not less than 30 minutes after flag D is displayed.'

5. SCHEDULE OF RACES

- 5.1. Time of warning signal

Class	26.10.2017.
RS-X	12:00
Finn	12:05
Laser	12:00
Laser radial	12:05
Laser 4.7	12.10
420	12:15

- 5.2. Times of warning signal for other days will be posted on the notice board.
5.3. Two races per day are scheduled for all classes except for RS-X 3 races are scheduled per day.
5.4. One extra race per day may be sailed, provided that no class becomes more than one race ahead of schedule and the change is made according to instruction 3.
5.5. On the last day of the regatta no warning signal will be made after 1500 hrs.

6. CLASS FLAGS

Class	Flag
Finn	Class flag
Laser	Class flag white with red logo
Laser radial	Class flag green with red logo
Laser 4.7	Class flag yellow with red logo
420	Flag J
STAR	Class flag

7. RACING AREA

Attachment A shows the location of racing area.

Area A: RS-X and Finn class

Area B: Laser, Laser radial, Laser 4.7 and 420 class.

8. THE COURSES

The diagram in Attachment B show the courses for RS-X and Finn class.

The diagram in Attachment C show the courses for Laser, Laser radial, Laser 4.7 and 420 class.

Diagrams including the approximate angles between legs, the order in which marks are to be passed, and the side on which each mark is to be left.

9. OZNAKE

9.1. Marks are described in Attachment B and C.

9.2. New marks, as provided in instruction 11.1, will be yellow buoys.

9.3. A race committee boat signalling a change of a leg of the course is a mark as provided in instruction 11.2.

10. THE START

10.1. Races will be started by using rule 26 with the warning signal made 5 minutes before the starting signal.

10.2. Area A: The starting line will be between mast displaying orange flag on the RC boat and orange buoy.

10.3. Area B: The starting line will be between masts displaying orange flags on the starting marks.

10.4. Boats whose warning signal has not been made shall avoid the starting area during the starting sequence for other races.

10.5. A boat starting later than 4 minutes after her starting signal will be scored Did Not Start without a hearing. This changes rule A4.

11. CHANGE OF THE NEXT LEG OF THE COURSE

11.1. To change the next leg of the course, the race committee will lay a new mark (or move the finishing line) and remove the original mark as soon as practicable. When in a subsequent change a new mark is replaced, it will be replaced by an original mark.

11.2. Except at a gate, boats shall pass between the race committee boat signalling the change of the next leg and the nearby mark, leaving the mark to port and the race committee boat to starboard. This changes rule 28.

12. THE FINISH

12.1. The finishing line will be between staff displaying an orange flag on the RC boat and orange buoy.

12.2. If the race committee is absent when a boat finishes, she should report her finishing time, and her position in relation to nearby boats, to the race committee at the first reasonable opportunity.

13. PENALTY SYSTEM

Appendix P will apply.

14. TIME LIMITS

Boats failing to finish within 15 minutes after the first boat sails the course and finishes will be scored Did Not Finish without a hearing. This changes rules 35, A4 and A5.

15. PROTESTS AND REQUESTS FOR REDRESS

- 15.1. Protest forms are available at the race office, located at _____. Protests and requests for redress or reopening shall be delivered there within the appropriate time limit.
- 15.2. For each class, the protest time limit is 60 minutes after the last boat has finished the last race of the day or the race committee signals no more racing today, whichever is later.
- 15.3. Notices will be posted no later than 30 minutes after the protest time limit to inform competitors of hearings in which they are parties or named as witnesses. Hearings will be held in the protest room, located at hangar in SC Uskok.
- 15.4. Notices of protests by the race committee or protest committee will be posted to inform boats under rule 61.1(b).
- 15.5. A list of boats that, under instruction 13 have been penalized for breaking rule 42 will be posted.
- 15.6. Breaches of instructions 10.4, 17, 20, 21 and 22 will not be grounds for a protest by a boat. This changes rule 60.1(a). Penalties for these breaches may be less than disqualification if the protest committee so decides.
- 15.7. On the last scheduled day of racing a request for reopening a hearing shall be delivered
 - a) within the protest time limit if the requesting party was informed of the decision on the previous day;
 - b) no later than 30 minutes after the requesting party was informed of the decision on that day.This changes rule 66.
- 15.8. On the last scheduled day of racing a request for redress based on a protest committee decision shall be delivered no later than 30 minutes after the decision was posted. This changes rule 62.2.

16. SCORING

When fewer than 4 races have been completed, a boat's series score will be the total of her race scores.

17. SAFETY REGULATIONS

A boat that retires from a race shall notify the race committee as soon as possible.

18. REPLACEMENT OF CREW OR EQUIPMENT

- 18.1. Substitution of competitors will not be allowed without prior written approval of the protest committee.
- 18.2. Substitution of damaged or lost equipment will not be allowed unless authorized by the race committee. Requests for substitution shall be made to the committee at the first reasonable opportunity.

19. EQUIPMENT AND MEASUREMENT CHECKS

A boat or equipment may be inspected at any time for compliance with the class rules and sailing instructions. On the water, a boat can be instructed by a race committee equipment inspector or measurer to proceed immediately to a designated area for inspection.

20. SUPPORT BOATS

Race Area Restrictions

Coach boats shall not be positioned:

- a) Closer than 50 metres of any boat racing
- b) Within 50 meters of the starting line and marks from the time of the warning signal until all boats have left the starting area, or the race committee signals a postponement, general recall or abandonment.
- c) Between any boat racing and the next mark of the course.
- d) Between the inner and outer trapezoid courses when boats are racing on both courses.
- e) Within 50 meters of any mark of the course while boats are in the vicinity of that mark.
- f) Within 50 meters of the finishing line and marks while boats are finishing.
- g) In addition, coach boats that are motoring above 5 knots shall remain at least 150 meters from any boat racing

21. TRASH DISPOSAL

Trash may be placed aboard support or official boats.

22. RADIO COMMUNICATION

Except in an emergency, a boat shall neither make radio transmissions while racing nor receive radio communications not available to all boats. This restriction also applies to mobile telephones.

23. PRIZES

See Notice of race.

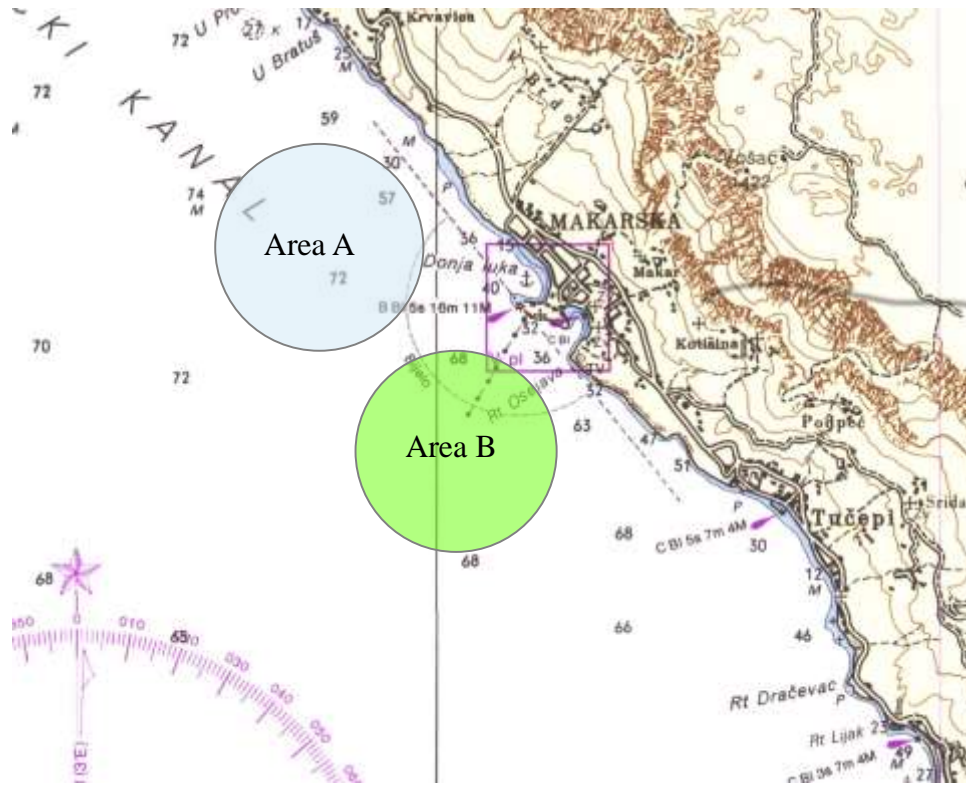
24. DISCLAIMER OF LIABILITY

Competitors participate in the regatta entirely at their own risk. See rule 4, Decision to Race. The organizing authority will not accept any liability for material damage or personal injury or death sustained in conjunction with or prior to, during, or after the regatta.

Attachment A RACING AREA

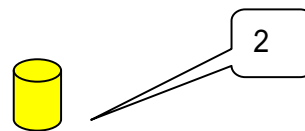
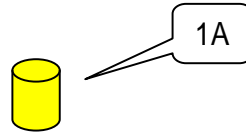
Area A clases RS-X i Finn

Area B clases Laser, Laser radial, Laser 4.7 i 420



Attachment B
COURSES: RS-X and Finn

Starting marks will be RC boat and red buoy
Finishing marks will be RC Boat and orange
buoy
Marks 1A i 2 will be red buoys.
Mark 1 will be red buoy.
Left marks 1 and 2 to port.
Course RS-X: Start – 1 – 2 – 1 – Finish



Attachment C

COURSES: Laser, Laser radial, Laser 4.7 and 420

Starting marks will be RC boats.

Finishing marks will be RC boat and yellow buoy.

Marks 1, 2, 3S, 3P, 4S, 4P will be red buoys.

Marks 1 and 2 have to be left on port.

Marks 3S, 3P i 4S, 4P are gate marks.

RC Signal boat will display course signal which have to be sailed on the bord located on the stern with or before warning signal.

